



# THE FACE-TO-FACE AIDS PROJECT 2010 FALL GRANT CATALOG



## Unique, Innovative Projects That Make An Impact

### PROJECTS IN MALAWI

#### **MALAWI-A.1** **Cooperative Garden for Food Security** \$12,500

*Location: Mchenga CBO, Mchenga village*

This grant reduces the risk of food shortage and malnutrition for impoverished, HIV-stricken households, and assists in school fees and uniform expenses in a rural community beset by famine and disease. The cooperative garden is on land donated by chiefs and village leaders, and benefits residents of 24 hamlets and over 2,500 orphans and vulnerable children.



#### **MALAWI-B.1** **Taking a Village Out of Extreme Poverty** \$12,000

*Location: Tilerane CBO, Kang'oma village*

Not only does this grant raise the quality of life in an impoverished rural village by providing food security for HIV and poverty-stricken households, it also introduces basic healthcare knowledge and nurtures leadership among its residents. This innovative, multi-pronged project aims to raise the overall quality of life and create a role model community.



#### **MALAWI-B.2** **Youth, HIV & Leadership in a Rural Village** \$3,000

*Location: Tilerane CBO, Kang'oma village*

The Kang'oma Youth Group is made up of mostly uneducated boys and girls who continue to learn about HIV and other diseases and use that knowledge to educate their community about safer sex, testing for HIV, treatment, and stigma and discrimination. In just its first year, the Kang'oma Youth Group has already educated thousands of people about HIV, which has resulted in hundreds of villagers getting tested.



#### **MALAWI-B.3** **A New Youth Group in a Nearby Community** \$4,000

*Location: Tilerane CBO, Kang'oma village and a nearby village*

This cutting edge project involves the Kang'oma Youth Group reaching out to a nearby village to help them form and operate their own youth group. This grant not only creates a new youth group that educates its residents about health issues, it also nurtures leadership skills in members of the original youth group.



#### **MALAWI-C.1** **Cooperative Rural Maize Garden** \$10,000

*Location: Chadika CBO, Chadika village*

Besides providing food security for HIV and poverty-stricken families, this project increases basic healthcare knowledge for appointed neighborhood representatives, nurtures leadership, and improves the overall quality of life for all residents in an impoverished rural village. This innovative project aims to create a role model community from which nearby communities can model themselves after.



#### **MALAWI-D.1** **Orphan Building Renovations** \$1,350

*Location: Chikondi CBO, Lilongwe*

This project covers renovation for an orphan centre, including replacing walls and ceilings that are in danger of collapse. This grant pays for doors, windows, iron sheets, cement, bricks, sand, roofing poles, and labor and carpentry.



### How Can I Adopt A Grant Project?

It's simple. Just call or email us and tell us which project interests you. We'll reserve it for you, and send you more information about your new project. See the back page of this catalog for contact information.

**MALAWI-D.2**

**Orphan Feeding Program**

\$3,800

Location: Chikondi CBO, Lilongwe

150 orphans and vulnerable children come to the Chikondi Orphan Care Centre to receive an education, as well as to partake in meals and snacks, which are sometimes the only nutritious food the children may receive that day. This grant covers this feeding program for one year.



**MALAWI-D.3**

**Orphan Care Center Operations**

\$1,550

Location: Chikondi CBO, Lilongwe

This grant covers the operational expenses for one year of the Chikondi Orphan Care Centre, a safe haven for over 150 children. Included in this grant are stipends for the director, the secretary, and the orphan care mother, as well as transportation, reed mats, and schooling materials.



**MALAWI-D.4**

**Group School Fees for Orphans**

\$1,350

Location: Chikondi CBO, Lilongwe

This grant covers the cost for 10 to 15 orphans who are registered with the Chikondi Orphan Care Center to attend primary school. Included are school fees, uniforms, shoes, school bags, pens, exercise books, and other school expenses.



**MALAWI-D.5**

**Training for Orphan Center Volunteers**

\$1,550

Location: Chikondi CBO, Lilongwe

20 participants receive a 6-day training session on how to care for orphans and vulnerable children, including how to administer basic healthcare, and lead counseling, play and educational activities.



**MALAWI-E.1**

**Documentation of an HIV+ Youth Group**

\$2,500

Location: Pendulum Project Malawi, Lilongwe

Fifteen HIV+ youth meet regularly to learn how to live with AIDS, and how to develop as individuals so that they may someday be role models for other youth with similar experiences. This grant covers documenting this remarkable group, including the challenges they face and the progress they make as individuals and as a group. The documentation will be used to help other HIV+ youth groups form in other parts of the country.



**MALAWI-F.1**

**Group Scholarships for Orphan Girls**

\$5,600

Location: Cedor CBO, Lilongwe

This grant covers 2 years of secondary school expenses for 8 girls who've lost parents or guardians, such as Memory Chisite, right, who dreams of someday becoming an ambassador so that she can help her fellow Malawians. You will be given information on who the girls are, and how they're progressing in school.



**MALAWI-G.1**

**Group Scholarships for Orphan Boys**

\$3,500

Location: MAGFA CBO, Lilongwe

This special fund covers secondary school expenses for 5 orphan boys, such as Madalitso Mpemba, right. This grant covers 2 years of schooling, which benefits boys like Madalitso because they know they can stay in school as long as they receive good grades. You'll be given information on who the boys are, and how they're progressing in school.



**MALAWI-H.1**

**Individual Secondary School Scholarships for Orphans**

\$350

Location: Tilerane & Paradiso CBOs, Lilongwe

Education is often the only way for orphans to escape the cycle of poverty. Our scholarship program is unique in that our orphans not only benefit by receiving secondary school education, they also learn to use their own backgrounds and experiences to develop understanding and compassion that'll help them get jobs in community development. For less than a dollar a day, this grant covers all expenses for one year for one student.



## **MALAWI-I.1**

### **Individual University Scholarships for Orphans**

\$2,200

*Location: Various universities*

Upon graduation, many orphans, like Aubrey Namakhwa, right, dream of advancing to university, which requires them to receive top marks to earn placement into a university. We counsel these high-achieving youth in careers in community development, as we believe these orphans can become outstanding leaders in the communities from which they came from. This scholarship covers all expenses for one year for one university student.



## **MALAWI-J.1**

### **Individual Vocational Training for Orphans**

\$1,400

*Location: various vocational schools*

After secondary school, some orphans can benefit by attending vocational school. This grant enables both boys and girls to acquire specific skills that will help them get jobs. Vocational training includes study in the fields of auto mechanics, accounting, office administration, healthcare, bakery and small businesses, and education. This scholarship covers all expenses for one year for one or more students.



## **MALAWI-K.1**

### **Group Orphan Leadership Program**

\$3,000

*Location: Pendulum Project Malawi*

The orphans on our scholarship program all come from backgrounds marked by poverty, hardship, and loss of life. While we cannot change their pasts, we can help them use their experiences to develop as confident, compassionate individuals who are role models for their peers. This unique program brings together orphan scholars on a regular basis and opens up their worlds to ideas and possibilities that can change both themselves and the communities they come from.



## **PROJECTS IN CAMBODIA**

### **CAMBODIA-A.1**

#### **A Teacher of Orphans**

\$1,000

*Location: Battambang and Phnom Penh*

This grant ensures that orphans and vulnerable children in Battambang and Phnom Penh benefit from a qualified, dedicated teacher. These teachers are committed to nurturing these children from poor families so that they are able and ready to enter public school. This grant covers one teacher's salary for one year.



### **CAMBODIA-B.1**

#### **Nutritious Meals for Impoverished Children**

\$3,600

*Location: Battambang and Phnom Penh*

This program enables 40 to 60 orphans and vulnerable children to receive at least one nutritious meal a day for one year. Because of their destitute home circumstances, these children might miss school because their families have no money for school fees, or they're forced to work instead of going to school. Families may be persuaded by these meals to allow their children to go to school.



### **CAMBODIA-C.1**

#### **School Materials and Uniforms**

\$1,500

*Location: Battambang and Phnom Penh*

Besides ensuring that between 40 to 60 children who attend special schools for orphans and vulnerable children have quality uniforms, this grant covers additional school materials such as exercise books and writing utensils. Also in this grant are 15 bicycles, to be shared and used by children who must commute long distances to school.



### **CAMBODIA-D.1**

#### **Operating a School**

\$2,000

*Location: Battambang and Phnom Penh*

For less than \$6 a day, this grant pays for operational costs for one of two special school for orphans and vulnerable children. This covers office supplies, training materials, cooking and janitorial services, and library materials.



**CAMBODIA-E. I**

**Total Costs for a School for Impoverished Children**

\$8,600

Location: Battambang

Make a huge difference in the lives of hundreds by covering all expenses for this special school. By adopting this project, you'll know you're giving 40+ children the chance to experience the joys and potentials of learning as well as the opportunity for their families to break the cycle of poverty. This grant covers total costs of this school for one year.



**CAMBODIA-F. I**

**Sewing Instructor**

\$1,800

Location: Battambang

This grant pays for one experienced sewing instructor for 20 fulltime students who come from impoverished households. The instructor teaches both general sewing theory, specific techniques, and home economics and business practices.



**CAMBODIA-G. I**

**Centre Coordinator**

\$1,000

Location: Battambang

This grant covers one coordinator who is responsible for charge operations at the SCC\*F2F Community Centre in Battambang. This coordinator is in charge of the orphan school, the sewing program, the craft program, as well as other activities such as counseling, meditation, psycho-therapy, and special events.



**CAMBODIA-H. I**

**Sewing Materials and Upkeep**

\$1,500

Location: Battambang

Covering costs of cloth, fabric, thread, yarn, buttons, clasps, zippers and other sewing materials, this grant also pays for repairs and upkeep of sewing machines and other equipment used by 20 students in a comprehensive sewing program.



**CAMBODIA-I. I**

**Meals for Participants in a Sewing Program**

\$2,000

Location: Battambang

This grant covers the cost of lunch for 20 sewing students for over 250 days. These students come from impoverished households — many have had to drop out of school to be caretakers of parents or younger siblings. This program allows each of the students to partake in one nutritious meal a day.



**CAMBODIA-J. I**

**Operations for a Sewing Program**

\$1,750

Location: Battambang

This covers operational expenses for running a comprehensive sewing program, including utilities, drinking water, heating, office supplies and teacher's materials.



**CAMBODIA-K. I**

**Total Costs for a Sewing Program**

\$8,400

Location: Battambang

This grant would cover the complete costs for running an important project for both women suffering from HIV/AIDS and poverty as well as orphan girls without guardians. More than just vocational training, this unique sewing program also teaches participants to manage their finances, to operate home businesses, and to do outreach so that they may reach other women in their neighborhood who experience similar hardships.



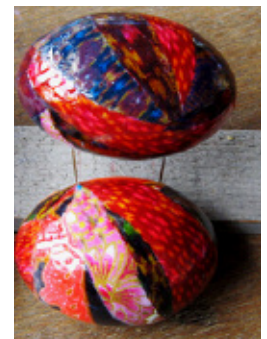
**CAMBODIA-L. I**

**Craft Program for HIV+ Cambodians**

\$3,000

Location: Battambang

This program not only provides a skill to help HIV+ people earn an income, it also provides a safe haven for them to be in the company of others without worry of stigma or discrimination. Some of the crafts offered include jewelry and beading, varnished craft, and hairstyling.



**CAMBODIA—M. I**

**Individual School Scholarships for Orphans**

\$250

Location: Battambang

For less than 75 cents a day, you can enable an orphan or vulnerable child in Cambodia to go to and to stay in school. This fund pays for school fees, transportation fees, school materials, and program services, including counseling, tutoring, and mentoring.



**CAMBODIA—N. I**

**Leadership Development for Orphans**

\$3,000

Location: Battambang

The orphans on our scholarship program all come from backgrounds marked by poverty, hardship, and loss of life. While we cannot change their pasts, we can help them use their experiences to grow as confident, compassionate individuals who develop into role models for their peers. This grant covers this unique program that brings together orphan scholars on a regular basis and opens up their worlds to ideas and possibilities that can change both themselves, and the communities they come from.



**The Face-to-Face AIDS Project**

**Face-to-Face AIDS Project—A. I**

**Operational Fund**

\$250, or larger amounts

Location: Brooklyn, New York

The staff at the Face-to-Face AIDS Project has worked on a volunteer basis for over 6 years. We need your support to take us and our programs to the next level — together, we can reach our goal of transforming HIV and poverty-stricken communities into role model communities. Please consider supporting our efforts to help others help themselves.



**How Can I Adopt a Grant Project and Make an Immediate Impact?**

It's simple. Just call or email us and tell us which project interests you. We'll reserve it for you, and send you more information about your new project. We'll also let you know how soon your grant can be implemented, and when you can expect your first update on your project.

**THE FACE-TO-FACE AIDS PROJECT**

75 Livingston Street #30A, Brooklyn, NY 11201

TEL: 917-208-0456, EMAIL: [director@facetofaceaids.org](mailto:director@facetofaceaids.org), WEBSITE: [www.facetofaceaids.org](http://www.facetofaceaids.org)

**TO DONATE TO THE FACE-TO-FACE AIDS PROJECT:**

BY MAIL: Please make checks out to the "Face-to-Face AIDS Project" and mail to the address above.  
ONLINE: Please visit [www.facetofaceaids.org](http://www.facetofaceaids.org) and follow the instructions on the "Contact & Donate" page.